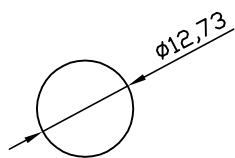
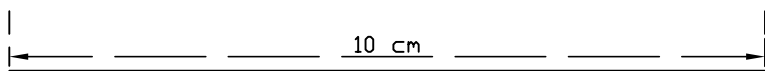


### Baguier(en millimètre)

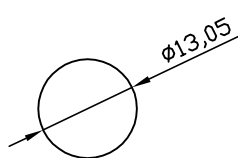
Imprimer ce baguier et posez une de vos bagues sur un cercle (diamètre indiqué en mm) pour trouver la taille de votre doigt.

Le trait du cercle doit toucher l'intérieur de votre bague.

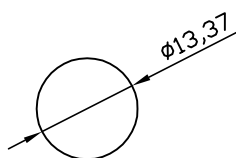
Pour vous assurer que l'échelle de ce baguier a été respectée par votre imprimante, mesurer la ligne ci-dessous (elle doit être de 10 cm).



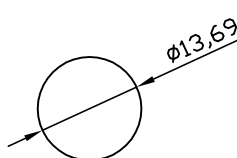
40



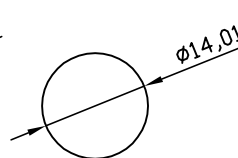
41



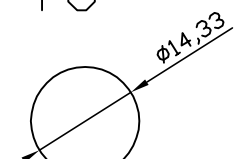
42



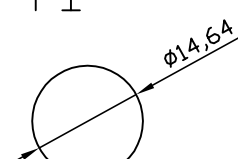
43



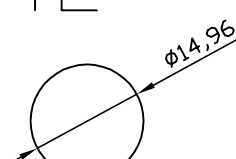
44



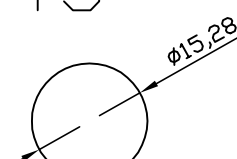
45



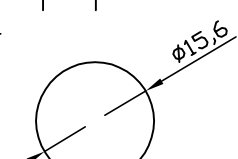
46



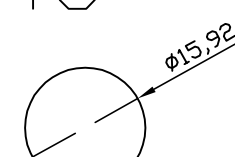
47



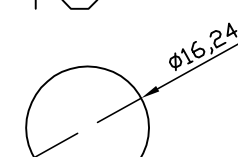
48



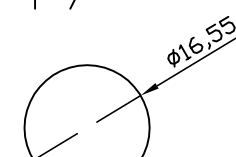
49



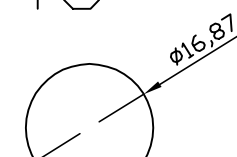
50



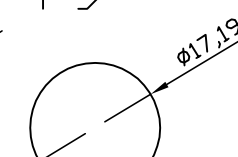
51



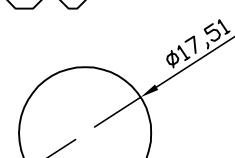
52



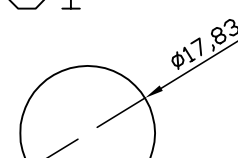
53



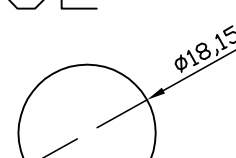
54



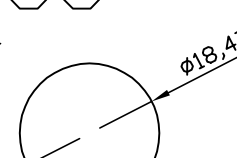
55



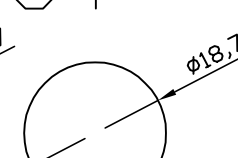
56



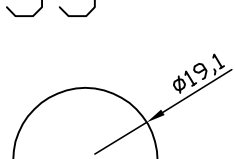
57



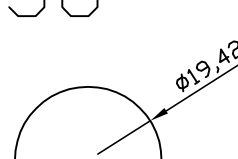
58



59



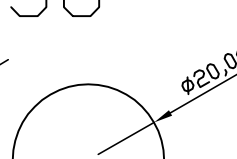
60



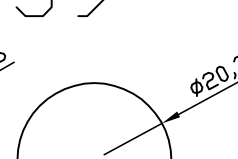
61



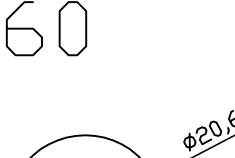
62



63



64



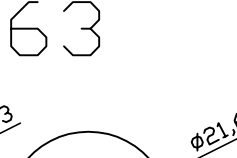
65



66



67



68



69